

## ŽLEZNE CELICE

### BETHESDA: Atipične žlezne celice, neopredeljene

Alenka Repše Fokter  
SB Celje

---

---

---

---

---

---

---

---

## Uvod

- Citološki pregled BMV – presejalni test za spremembe na ploščatih in žleznih celicah
- Namen: odkriti čim več "pravilno patoloških" BMV (občutljivost testa) in čim manj "napačno patoloških" BMV (specifičnost testa)

---

---

---

---

---

---

---

---

## Uvod

- AŽC:
  - niso vedno žlezne
  - niso vedno atipične
- AŽC:
  - dovolj pogosto klinično tako pomembne, da jih je potrebno skrbno spremljati

---

---

---

---

---

---

---

---

## Uvod

- Delež AŽC v literaturi: 0,1% do 2,5% (povprečno 0,4-0,5%)
- AŽC ► negativen follow up: 60% (15-80%)
- AŽC ► pomembne patološke spremembe: do 40%  
-bolj pogosto ploščatocelične (~75%) kot žlezne

---

---

---

---

---

---

---

---

## Uvod

- Občutljivost Pap testa je pri ocenjevanju žleznih sprememb nižja kot pri ploščatih celicah zaradi problemov pri vzorčenju in interpretaciji
- AŽC, neopredeljene – slabša reproducibilnost, a kljub temu pomembna informacija pri odločanju o nadaljnjih diagnostičnih postopkih

---

---

---

---

---

---

---

---

## Uvod

Citološka diagnoza	Histološka diagnoza
adenokarcinom	adenokarcinom
AIS	AIS
AŽC – verjetno neoplastične	negativno, <b>CGIN, AIS, CIN</b> , karcinom
AŽC - neopredeljene	?

---

---

---

---

---

---

---

---

## Definicija

- Celična in jedrna atipija sta bolj izraženi kot pri reaktivnih spremembah, vendar celice nimajo značilnosti AIS.

---

---

---

---

---

---

---

---

## Citološke značilnosti

- Celice ležijo v skupinah in trakovih
- Prekrivanje jeder je neizrazito
- Jedra so povečana do 3x v primerjavi z jedri endocervikalnih celic
- Prisotna je blaga anizonukleozna in hiperkromazija

---

---

---

---

---

---

---

---

## Citološke značilnosti

- Zelo redko so prisotne mitoze.
- Razmerje med velikostjo jeder in citoplazme je povečano v korist jedra.
- Meje med celicami so lahko ohranjene.

---

---

---

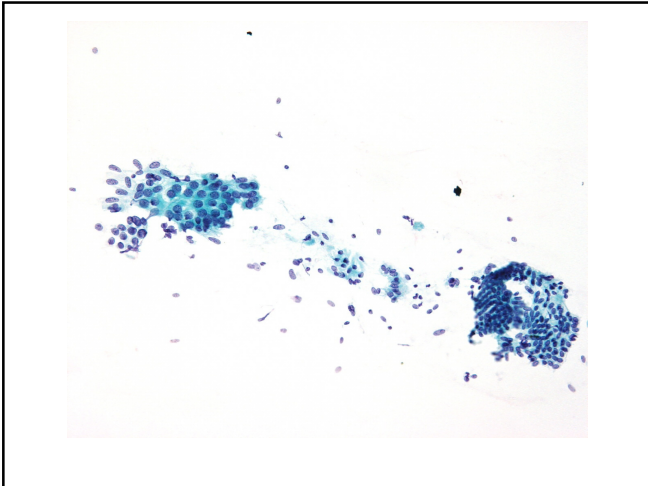
---

---

---

---

---



---

---

---

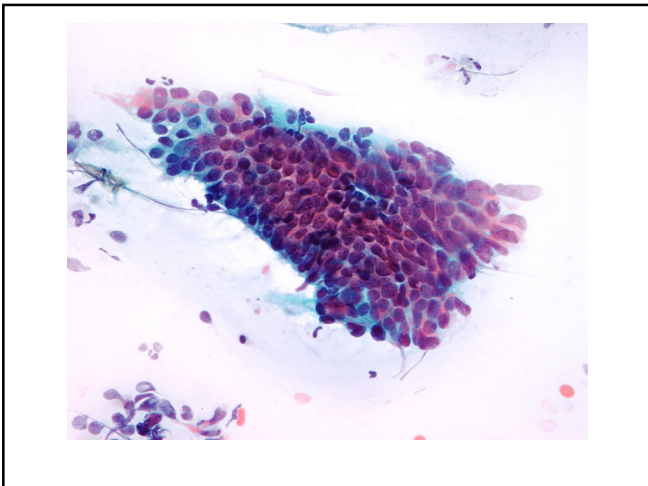
---

---

---

---

---



---

---

---

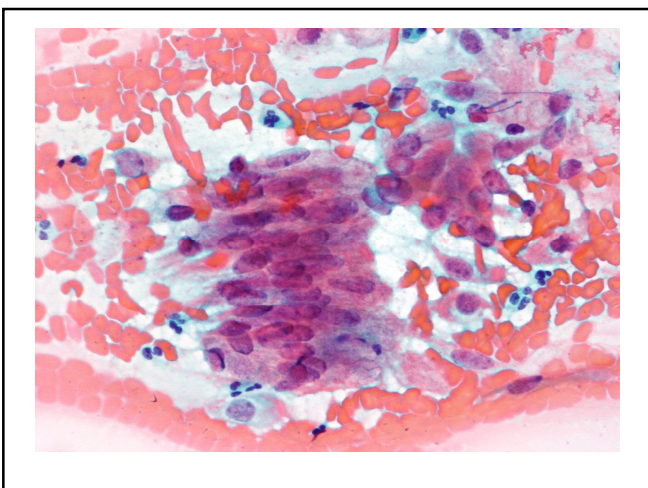
---

---

---

---

---



---

---

---

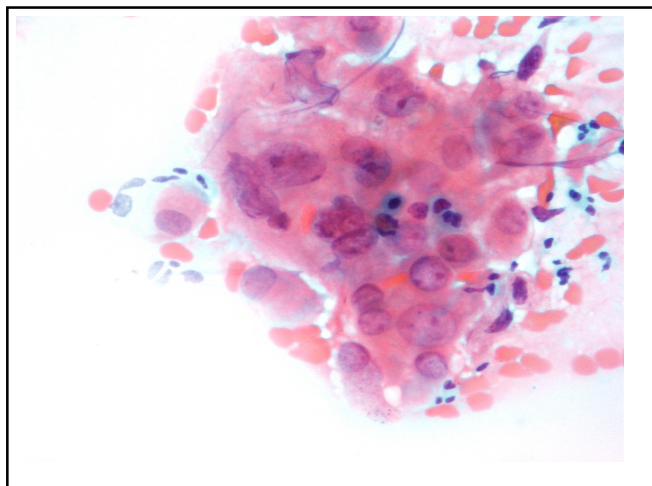
---

---

---

---

---



---

---

---

---

---

---

---

### Atipične endometrijske celice

- Ležijo v majhnih skupinah (5 do 10 celic).
- Jedra so v primerjavi z normalnimi endometrijskimi celicami rahlo povečana.
- Vidni so lahko majhni nukleoli.

---

---

---

---

---

---

---

### Atipične endometrijske celice

- Citoplazma je običajno slabo omejena, pičla, lahko vakuolizirana.
- Pri endometrijskih celicah ne ločujemo atipične, neopredeljene in atipične verjetno neoplastične, ker je reproducibilnost zelo slaba.

---

---

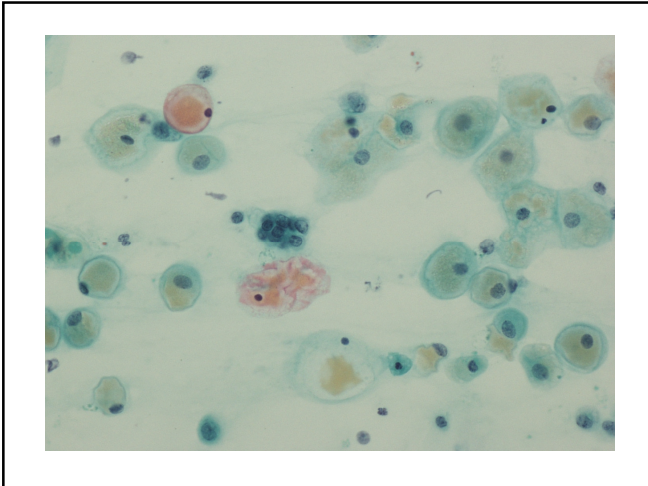
---

---

---

---

---



---

---

---

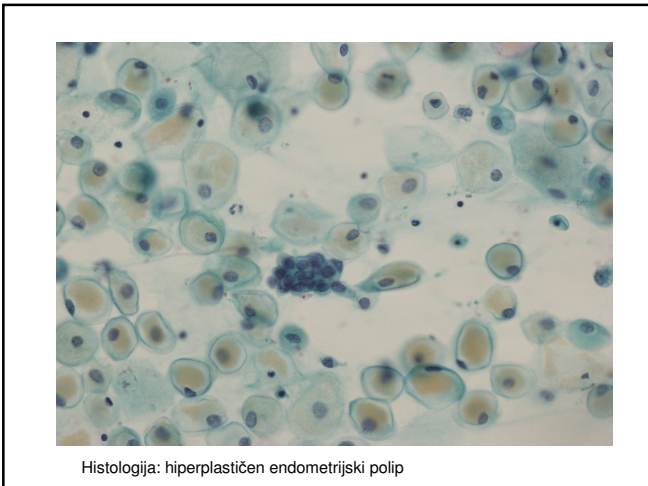
---

---

---

---

---



Histologija: hiperplastičen endometrijski polip

---

---

---

---

---

---

---

---

## Diferencialna diagnoza

- Ne neoplastične spremembe
  - regeneracija
  - mehanski vpliv materničnega vložka
  - tubarna metaplazija
  - "brush" efekt
  - artefakt po konizaciji ("cone biopsy artifact")
  - vpliv zdravljenja
  - ...
- PIL visoke stopnje, karcinom

---

---

---

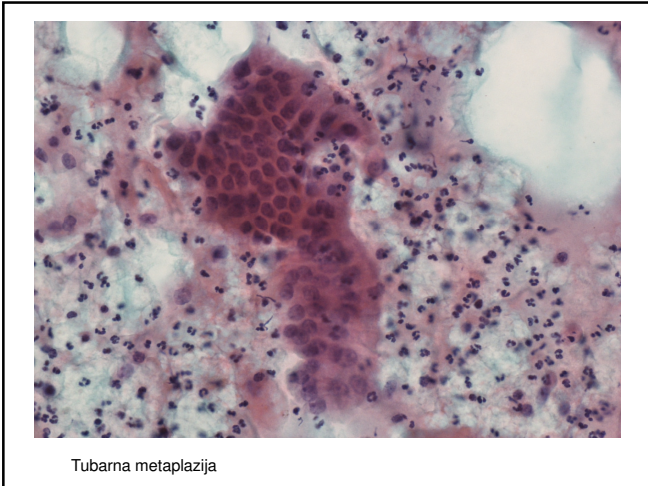
---

---

---

---

---



---

---

---

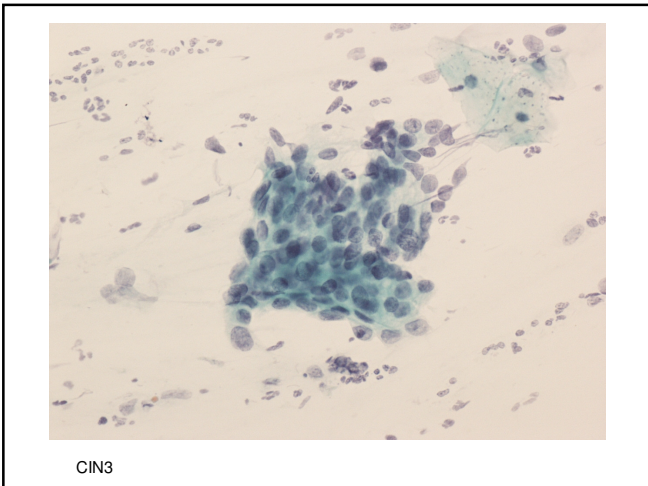
---

---

---

---

---



---

---

---

---

---

---

---

---

**Zaključek**

“AGC is for those times when you can't tell for sure what's going on, but you're worried about what you see.”

(Richard M DeMay)

---

---

---

---

---

---

---

---