

Pomen multidisciplinarnega pristopa v presejalnem programu

Damir Franić*, Uršula Salobir Gajšek, Ana
Katarina Seher***, Lidija Salobir***, Alenka
Repše Fokter***, Simona Šramek Zatler*****

***Zasebna ginekološka ordinacija Dr. Franić**

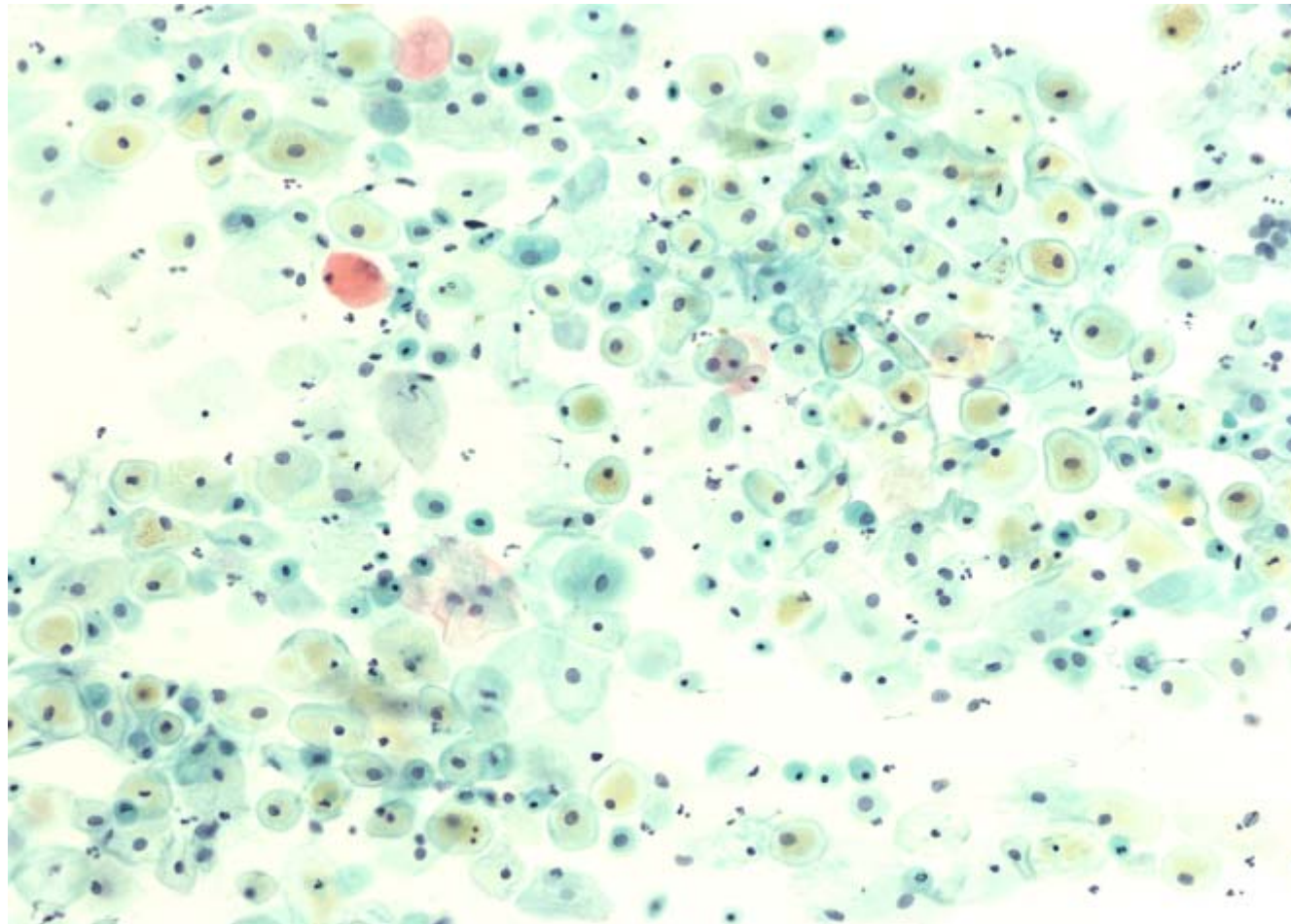
****Ginekološko porodniški oddelek, Splošna bolnišnica Celje**

*****Oddelek za patologijo in citologijo, Splošna bolnišnica Celje**

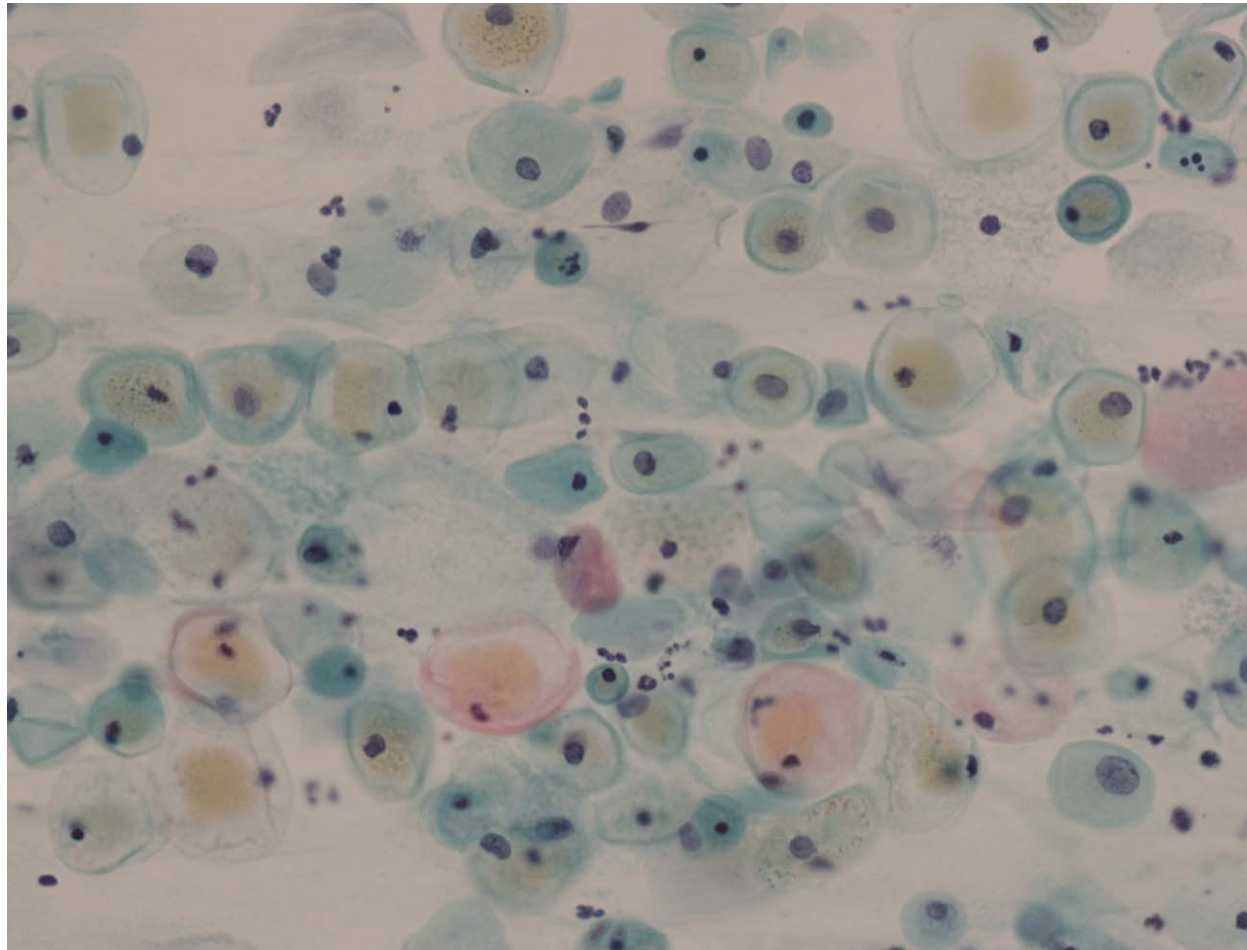
2008

- 65 letna pacientka
- preventivni ginekološki pregled
- ginekološko brez posebnosti
- citološki izvid: normalen

2008



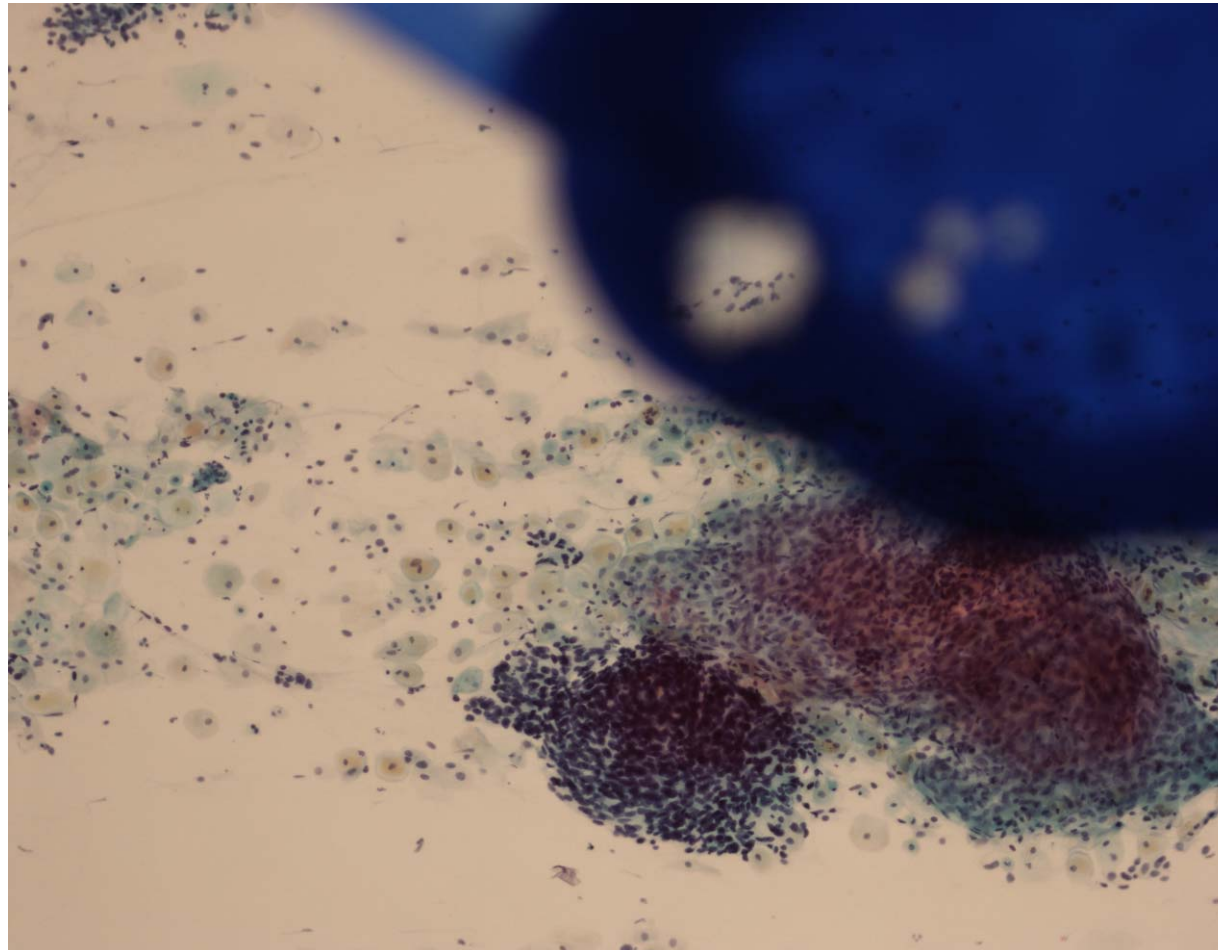
2008



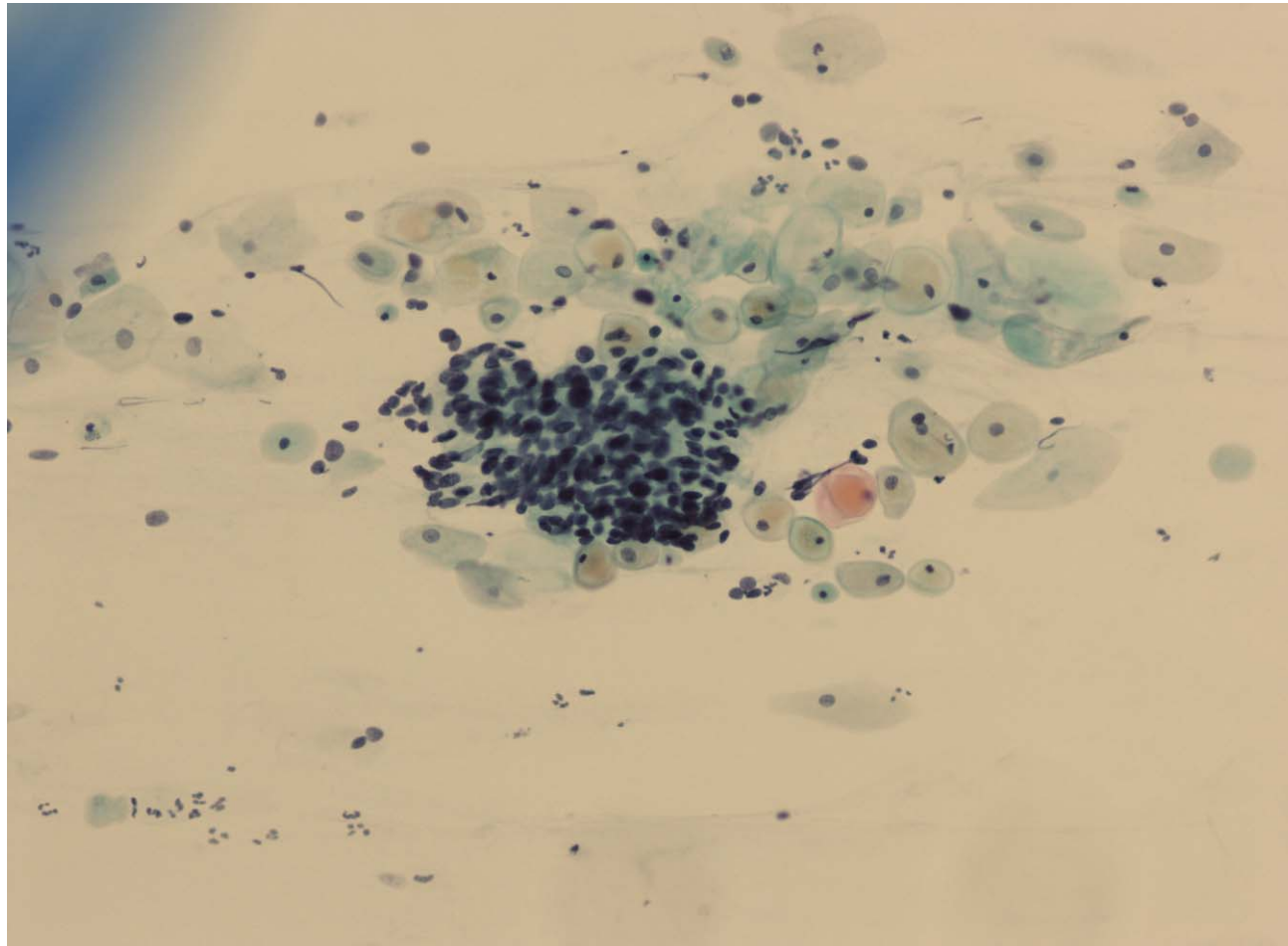
2011

- preventivni ginekološki pregled
- ginekološko brez posebnosti
- citološki izvid 2008: normalen

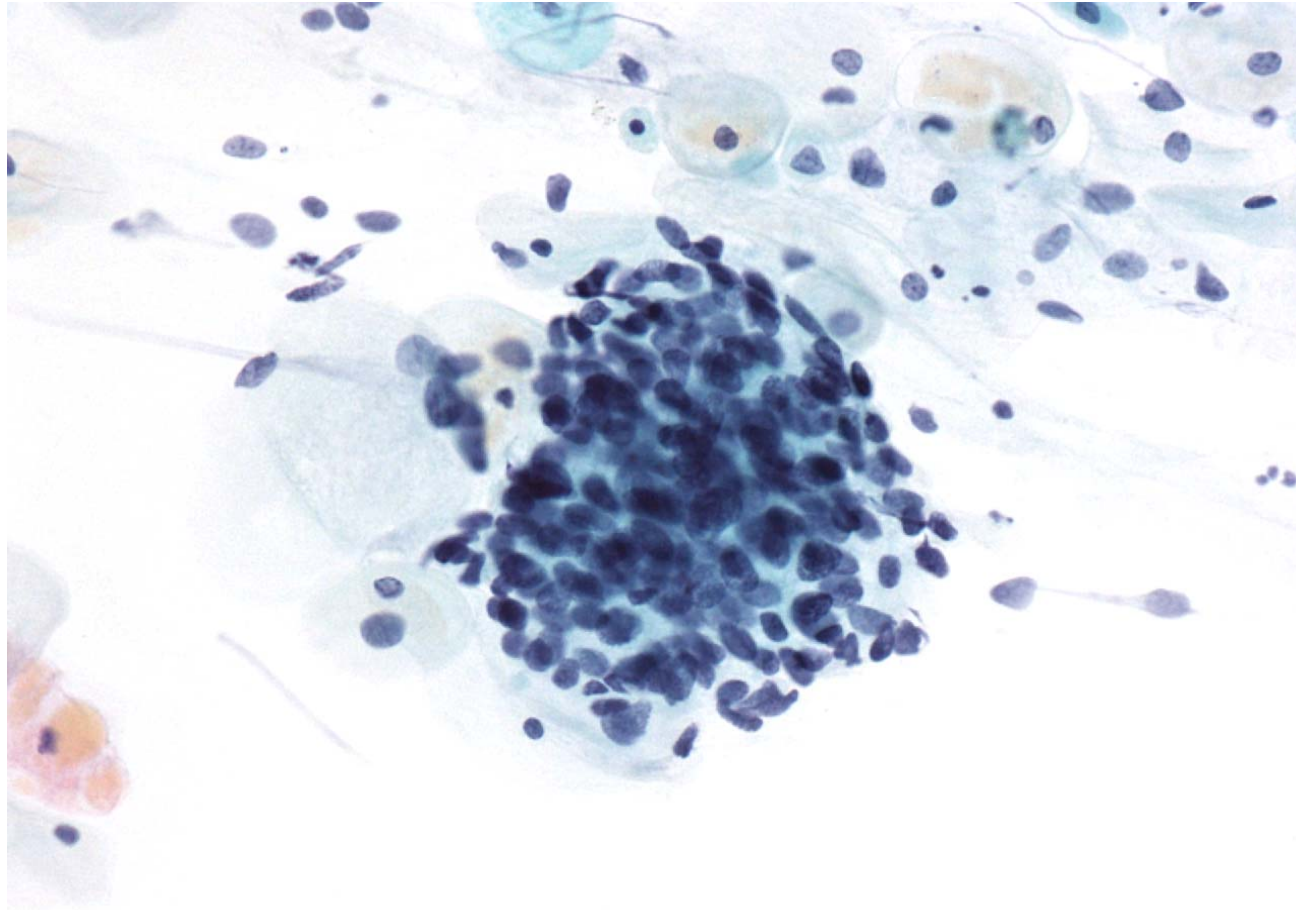
2011



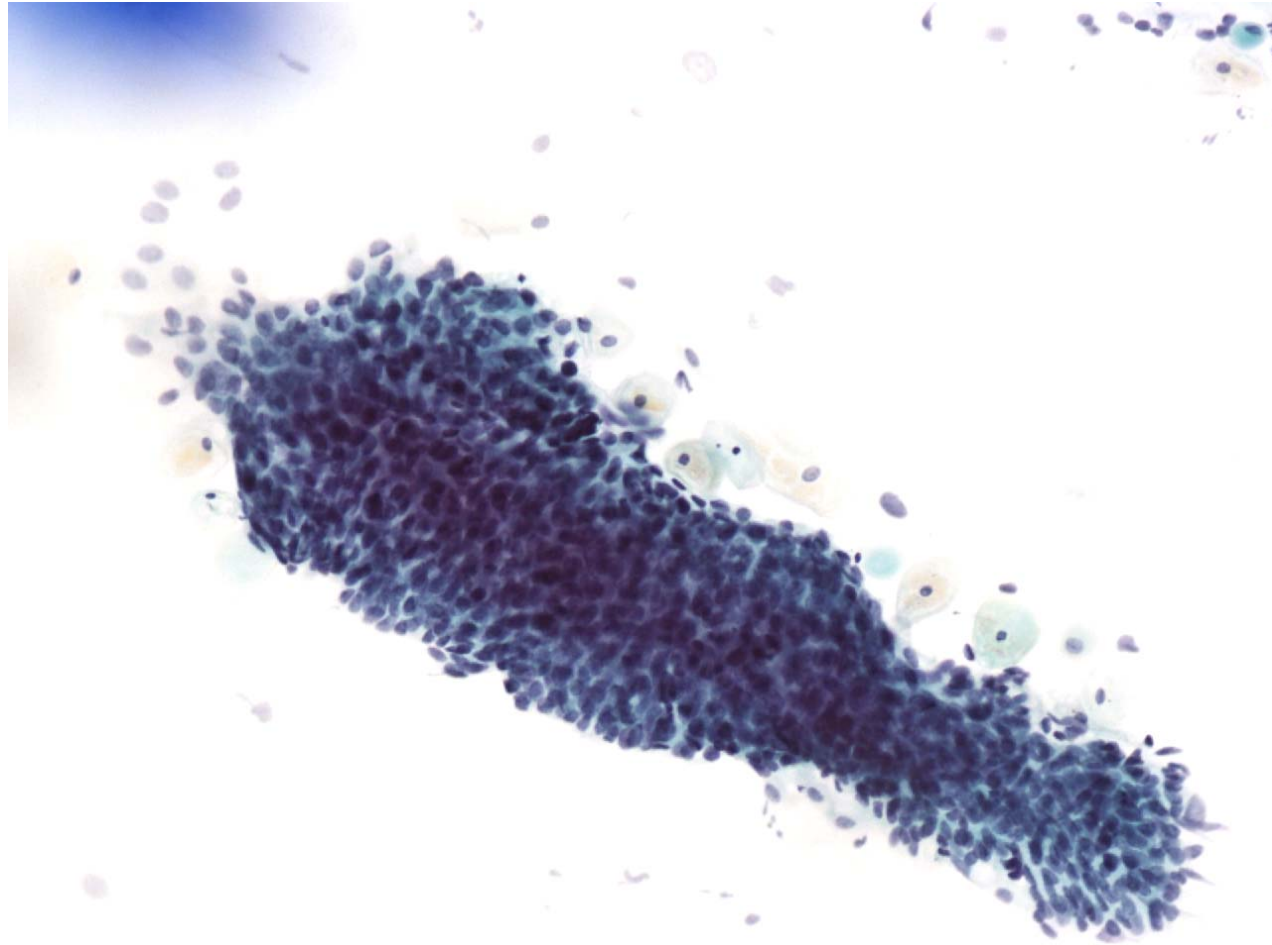
2011



2011



2011



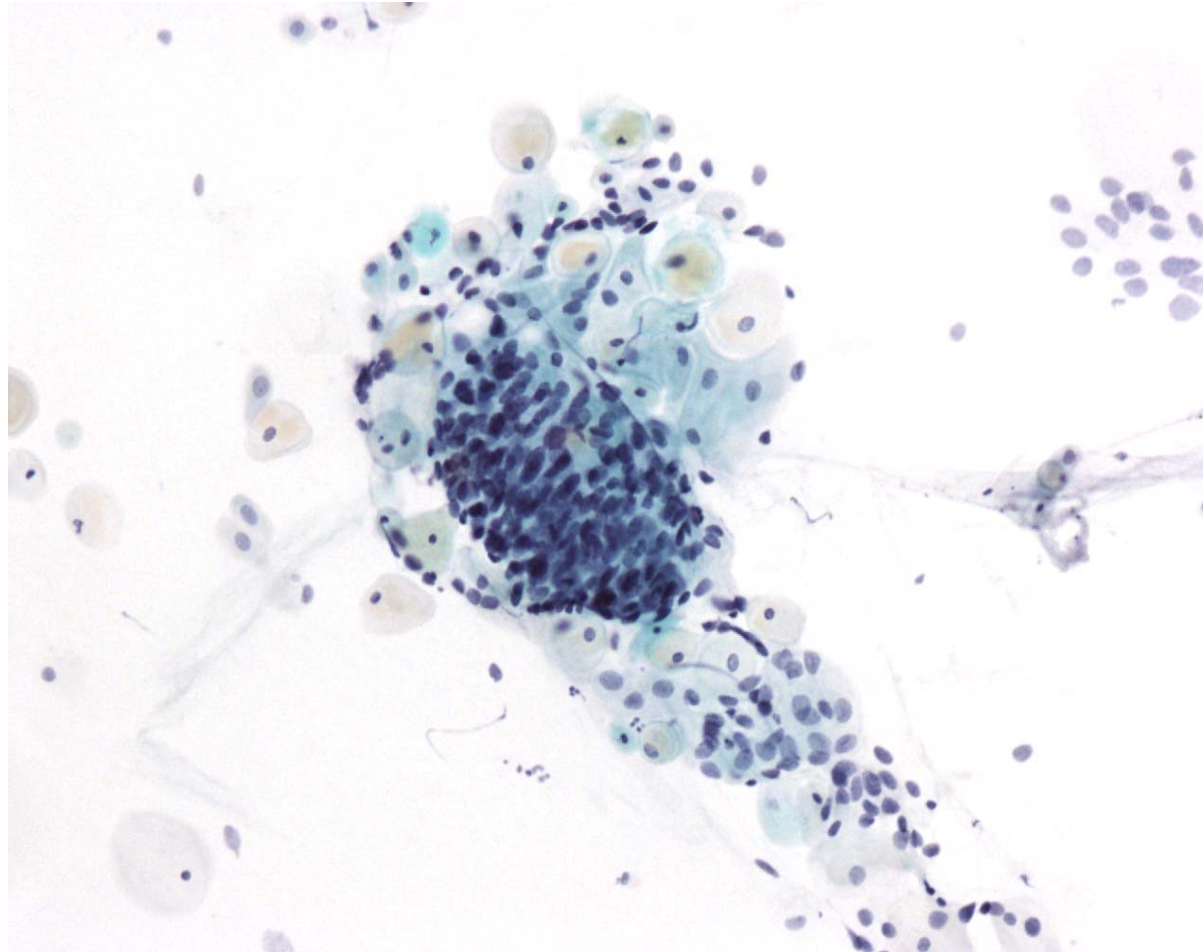
Ocena BMV

- Huda diskarioza ploščatih celic

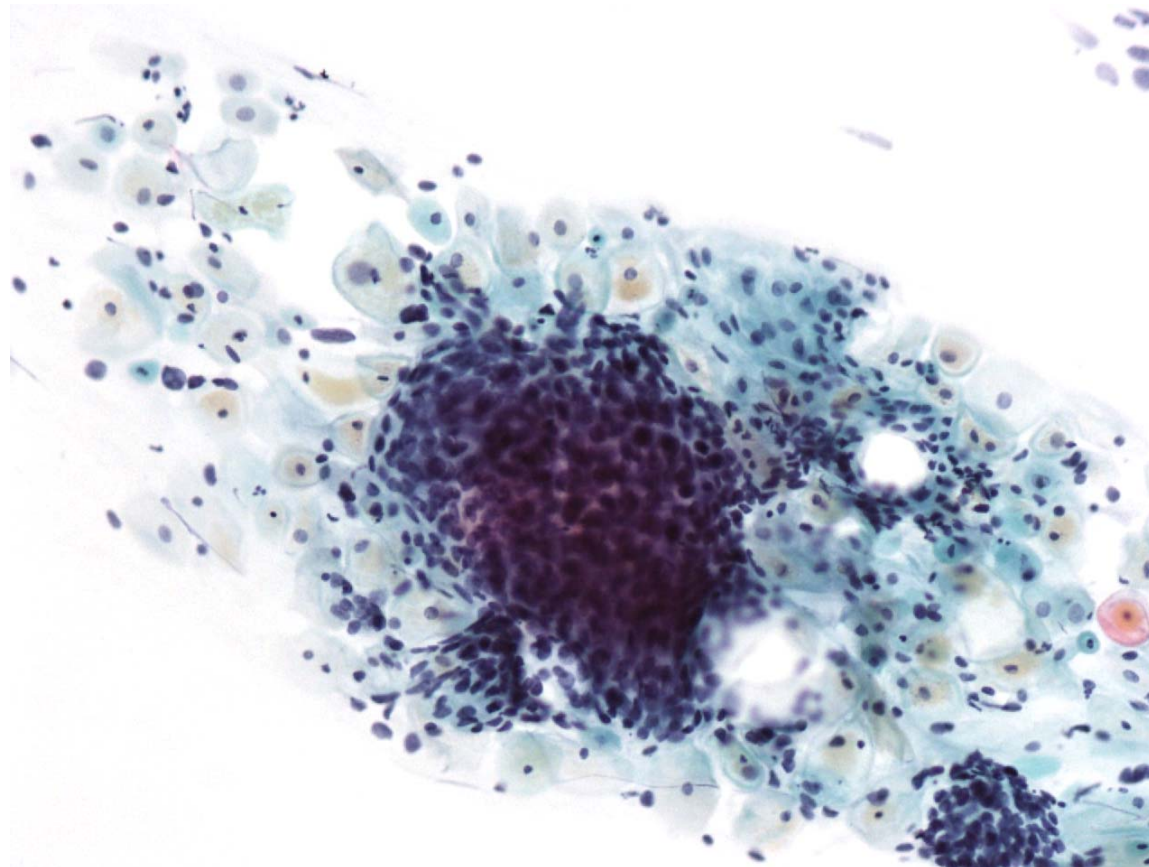
Nadaljnji potek

- Histološki izvid - LLetz: ni displazije

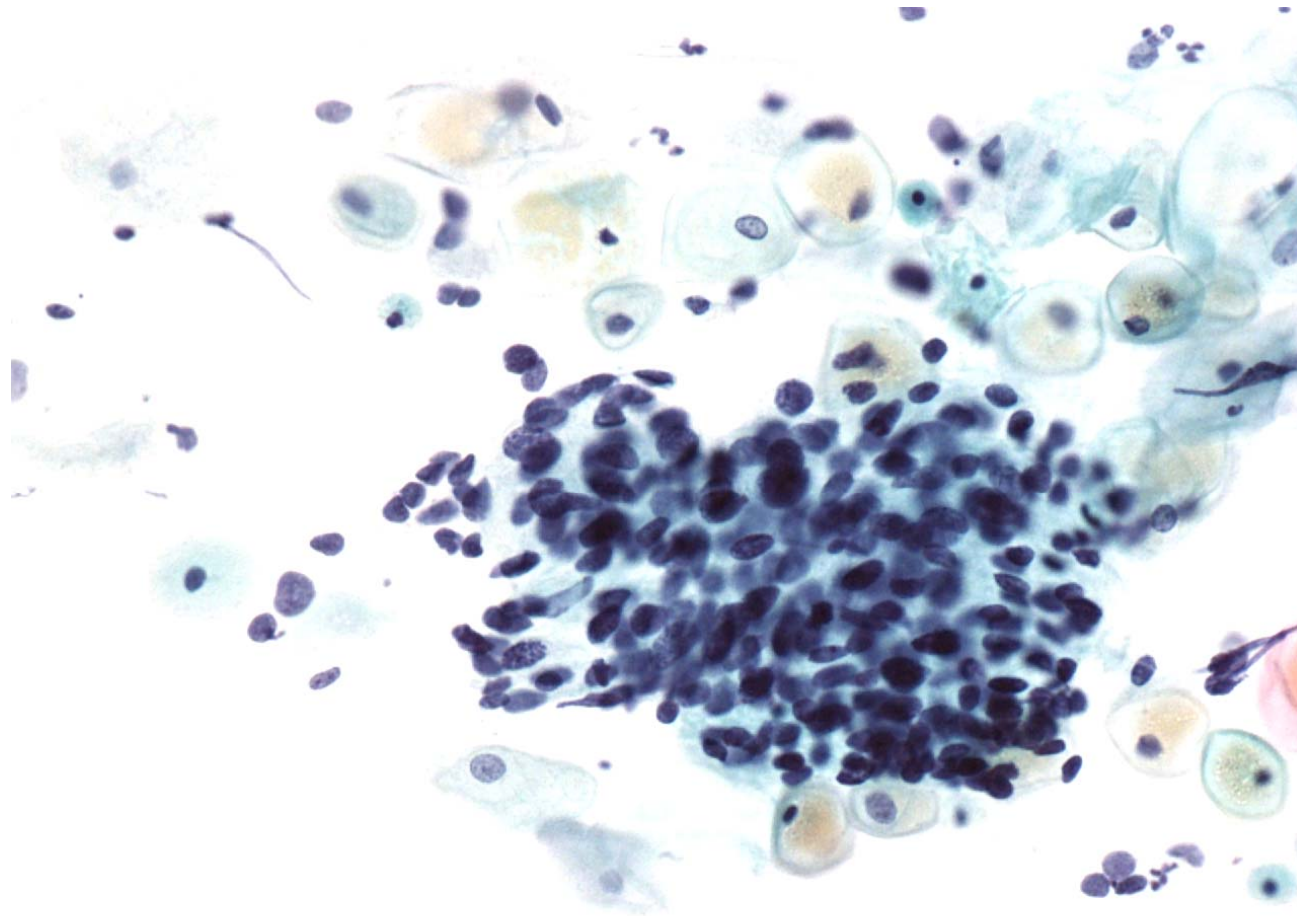
2011



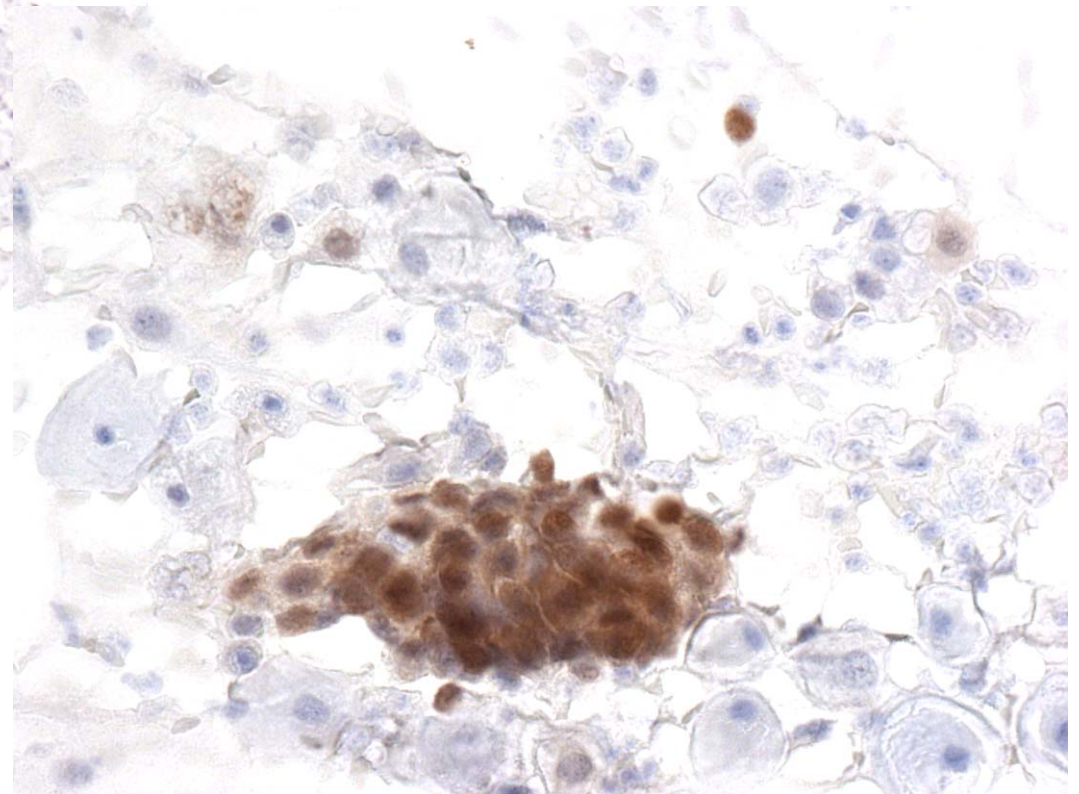
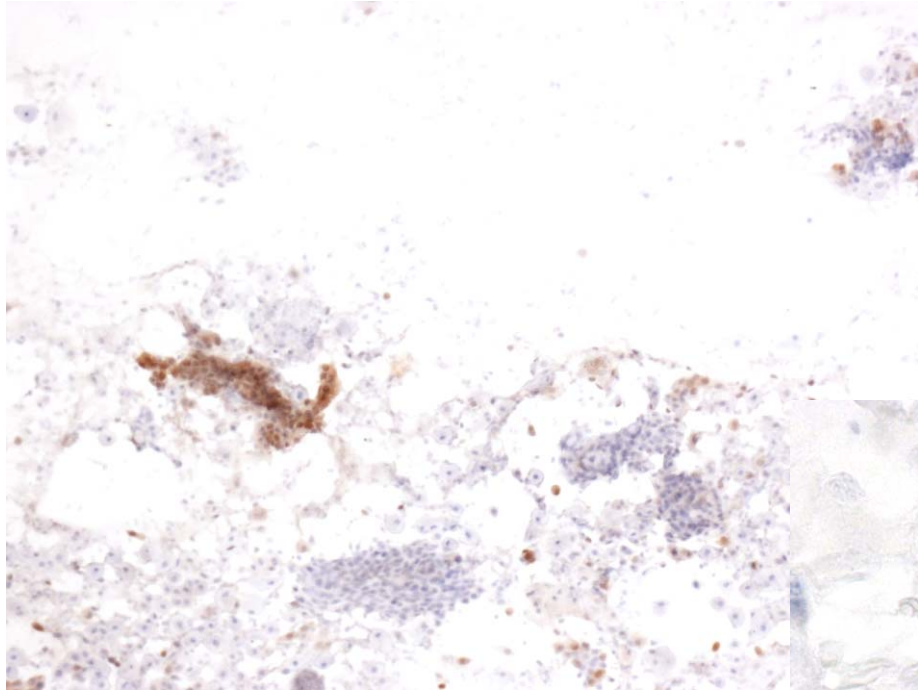
2011



2011

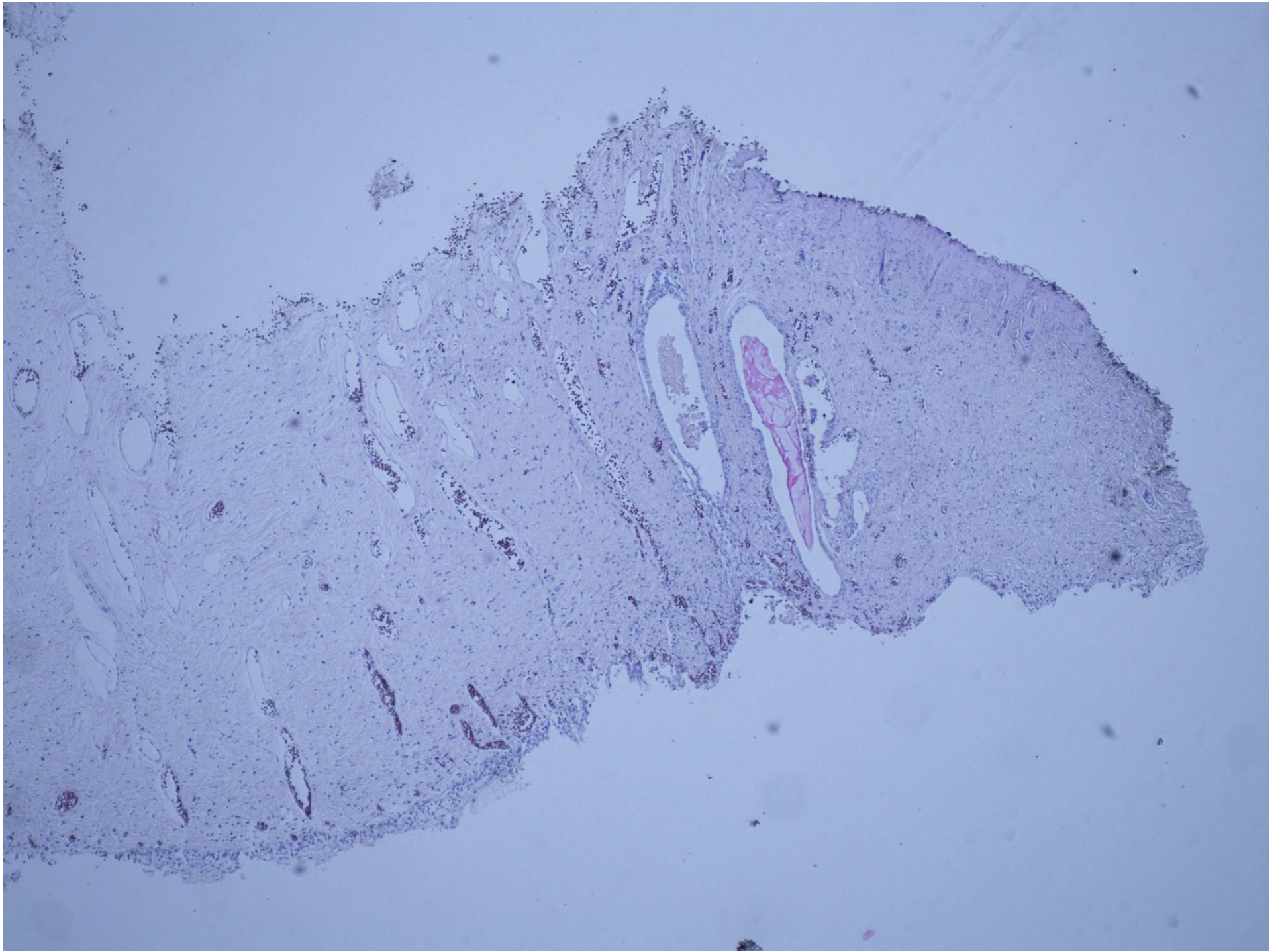


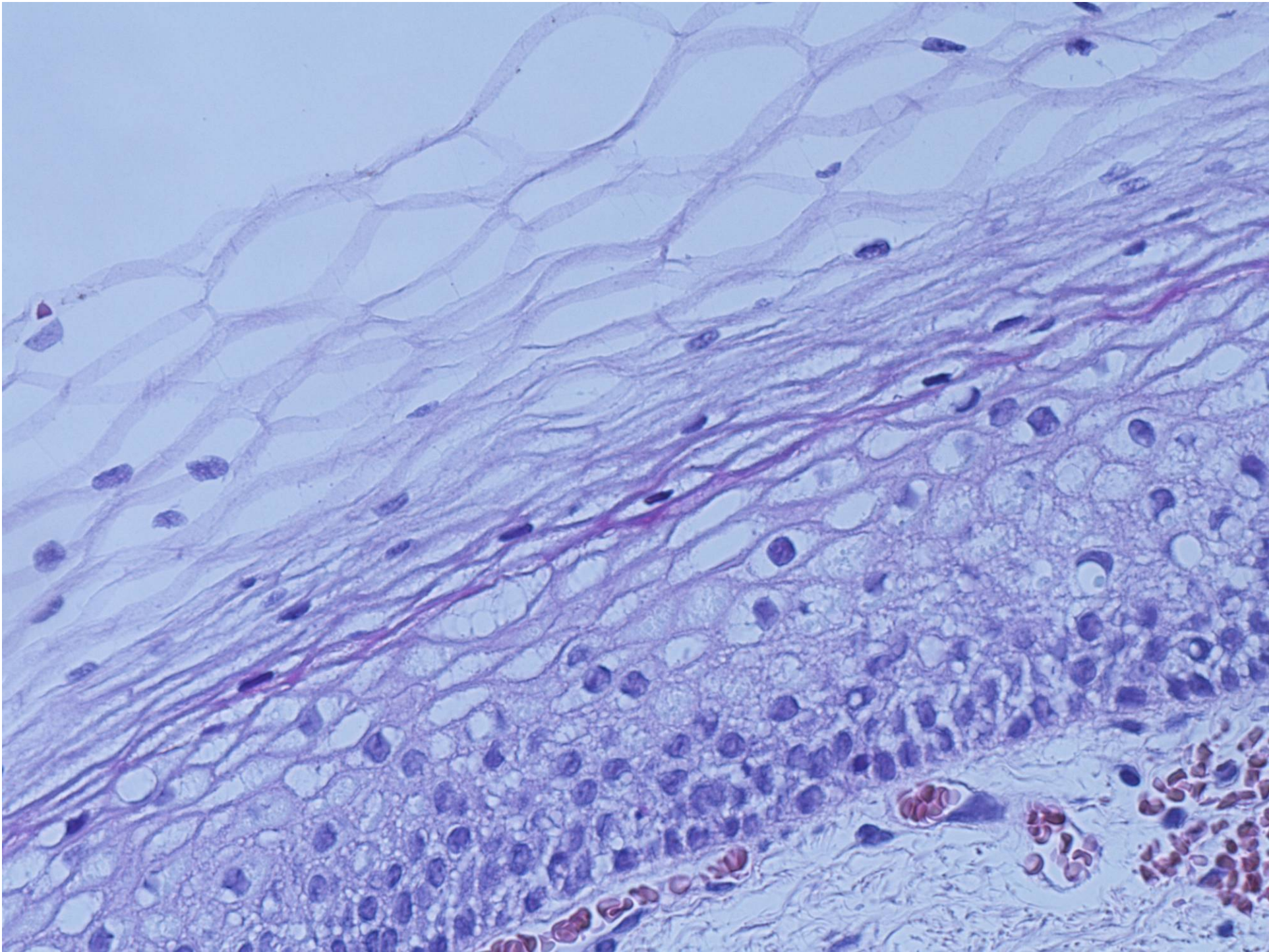
2011- p16

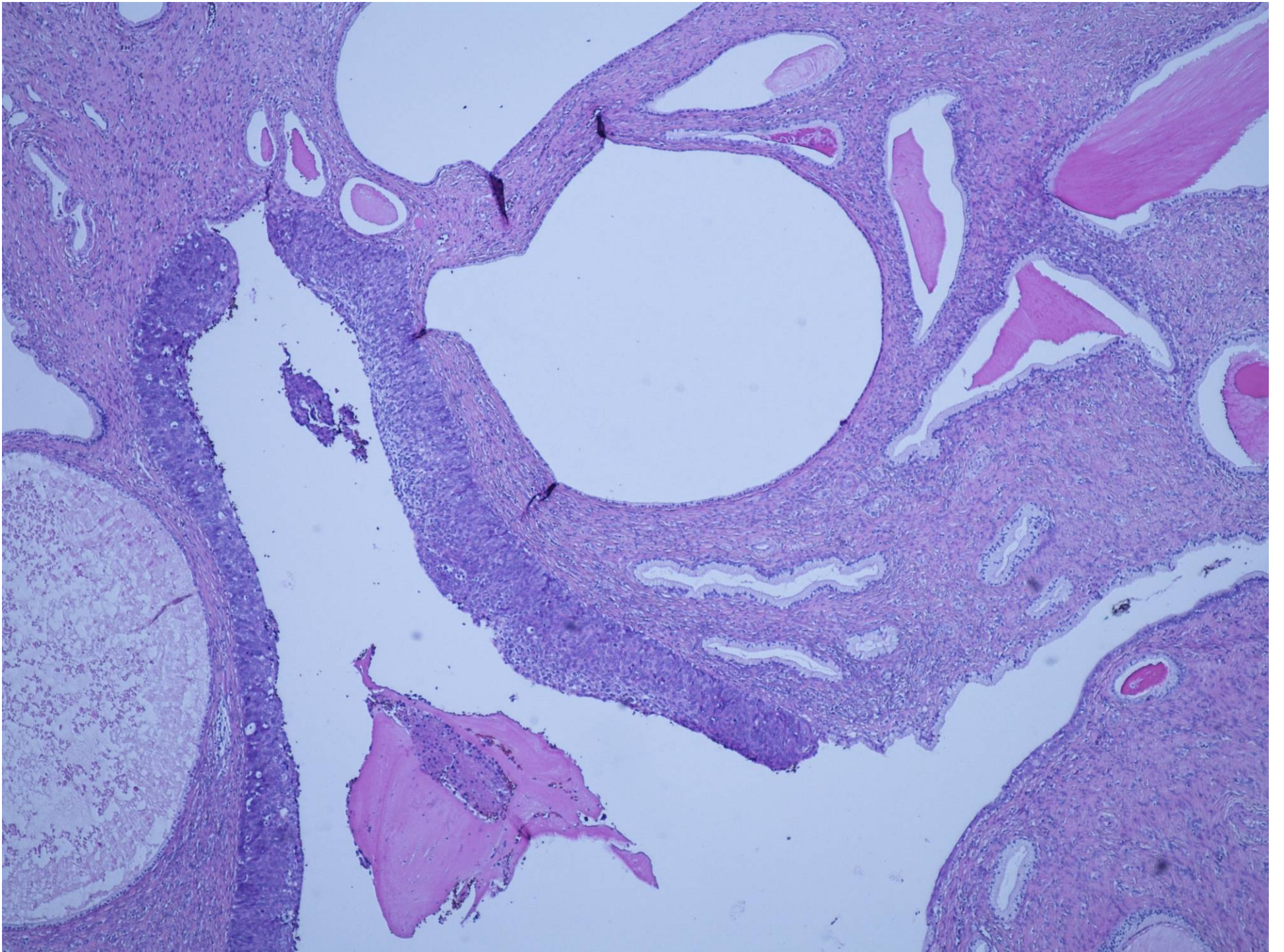


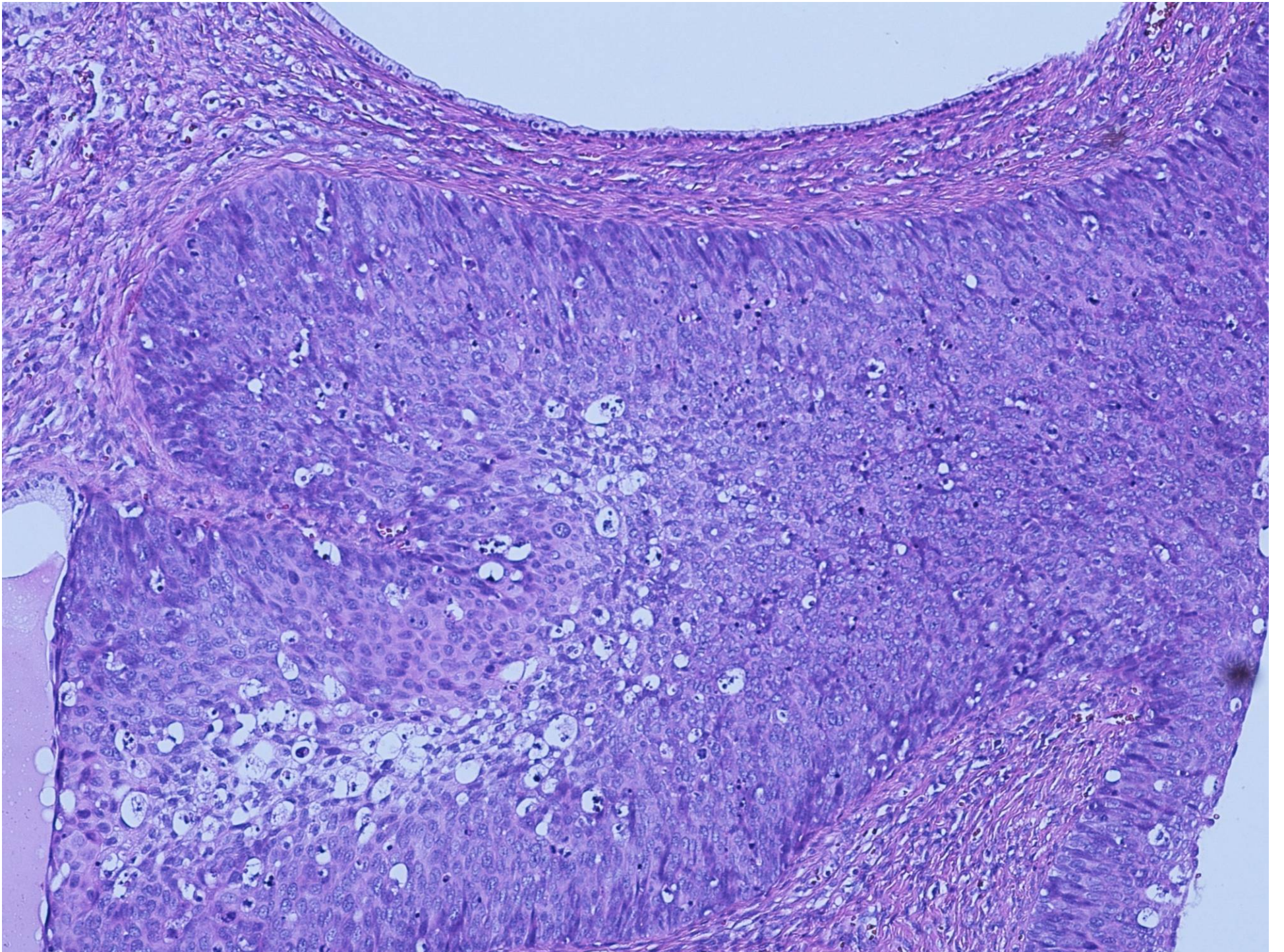
Nadaljnji potek

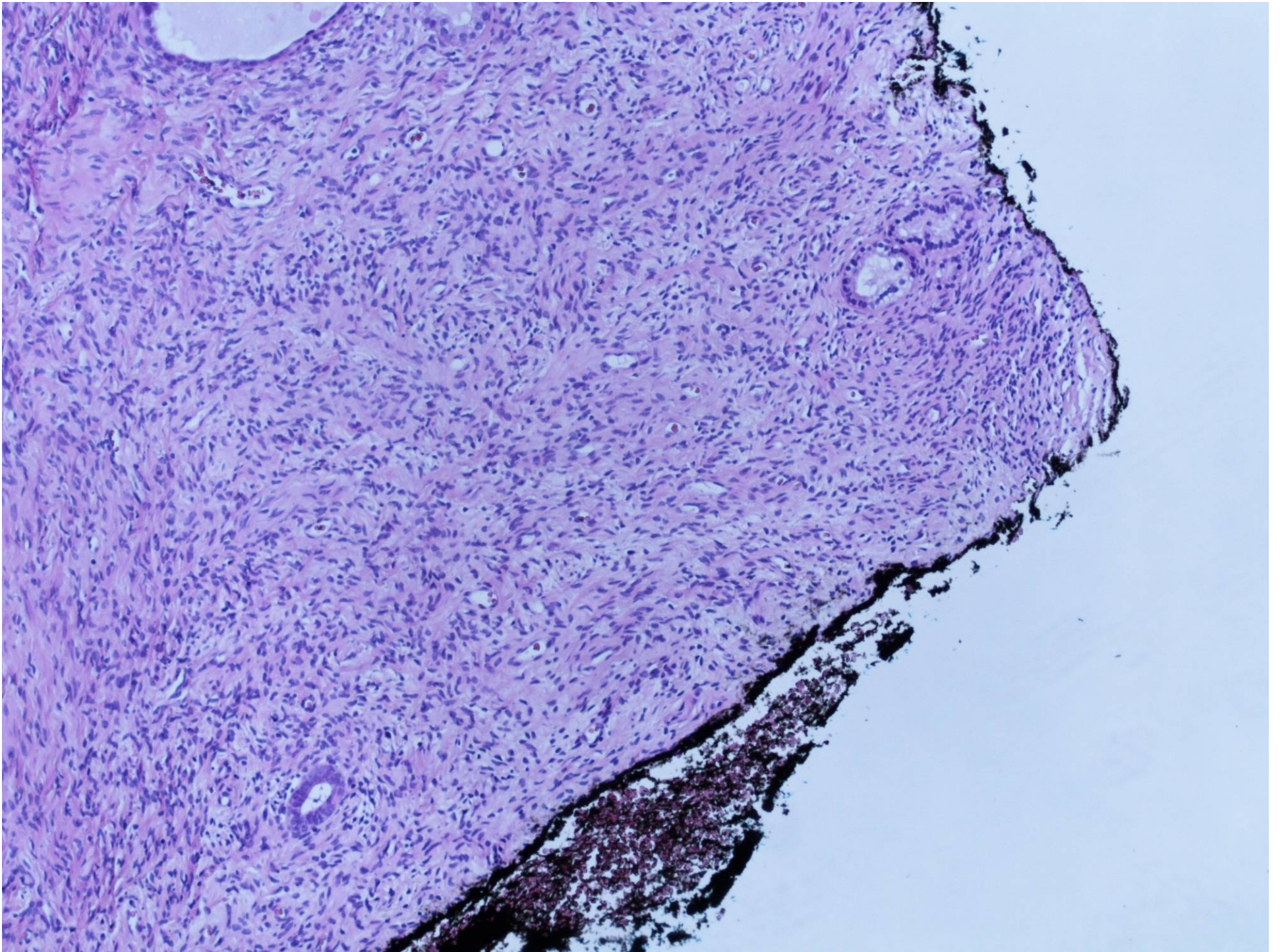
- Citološki izvid: hudo diskariotične ploščate celice (izvid potrjen tudi na konzultaciji v Ljubljani)
- Sklep konzilija: globok reLLetz ali klasična konizacija
- Globoka konizacija: premer 2 cm, višina od baze do vrha 3,3 cm











Histološki izvid

- CIN3 portionis uteri – globoko v endocervikalnem kanalu

Zaključek

- V primerih neskladja med klinično sliko, citološkim in histološkim izvidom je nujno sodelovanje med ginekologi citologi in patologi